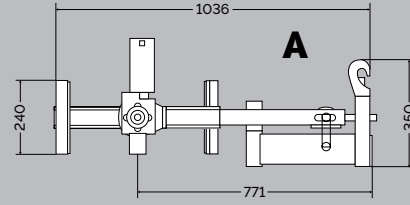


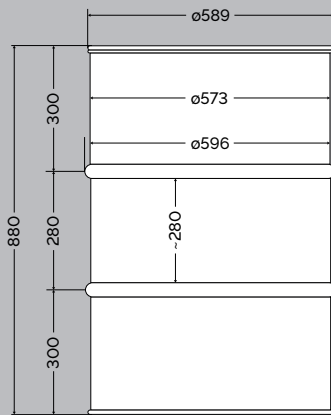
A

Drum turner for standard steel drums (DS/EN 210).

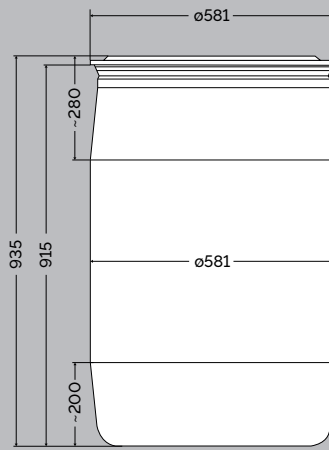


B

Drum turner for standard plastic drums (DS/EN 12707).



Standard steel drum (DS/EN 210).



Standard plastic drum (DS/EN 12707).

PRODUCT (measured in mm)	MANUAL (EN 210)	ELECTRIC (EN 210)	MANUAL (EN 12707)	ELECTRIC (EN 12707)
Capacity i kg	250	250	250	250
Turning angle	360°	360°	360°	360°
Gear	Manual	12V-200W/24V-200W	Manual	12V-200W/24V-200W
Gearing	1:80	1:912	1:80	1:912
Speed of rotation		1,6 rpm/min		1,6 rpm/min
Distance from floor to drum turner	260 mm	260 mm	260 mm	260 mm