

# STACKERS INOX

SPECS AND KEY SKETCHES



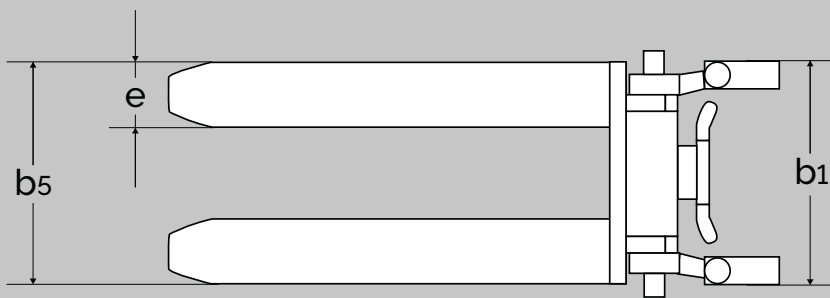
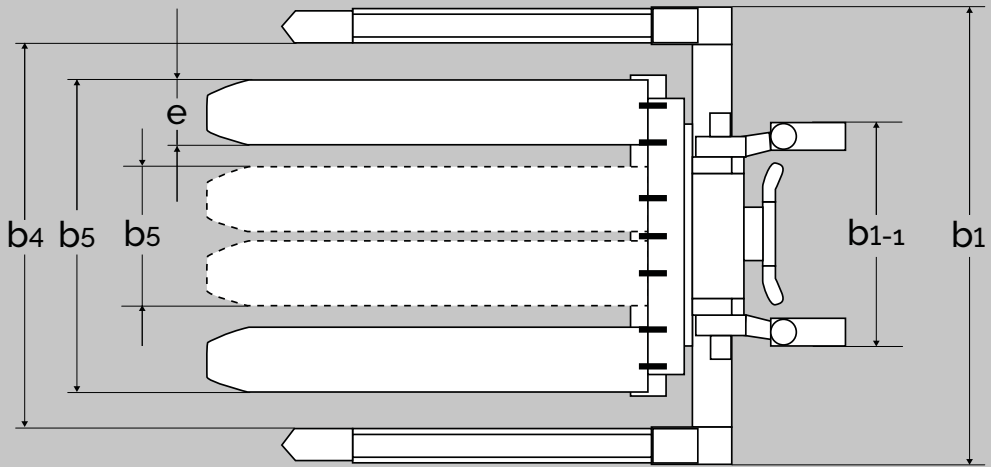
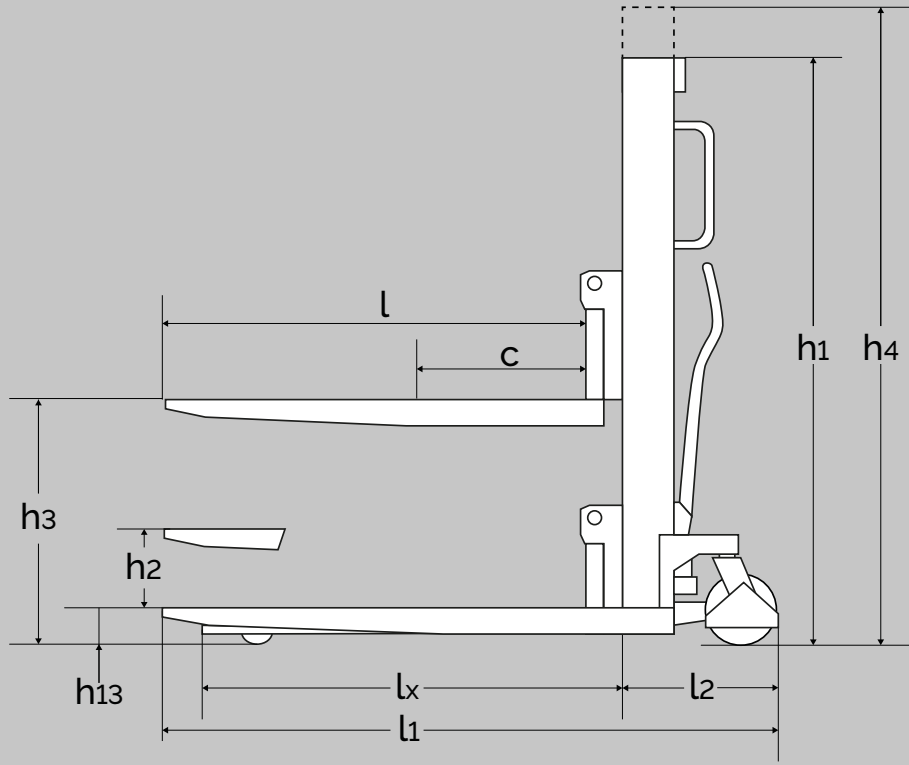
**MANUAL STACKER INOX +  
STRADDLE (HS/HSS 1000)**



**ELECTRIC STACKER INOX +  
STRADDLE (EHS/EHSS 1000)**



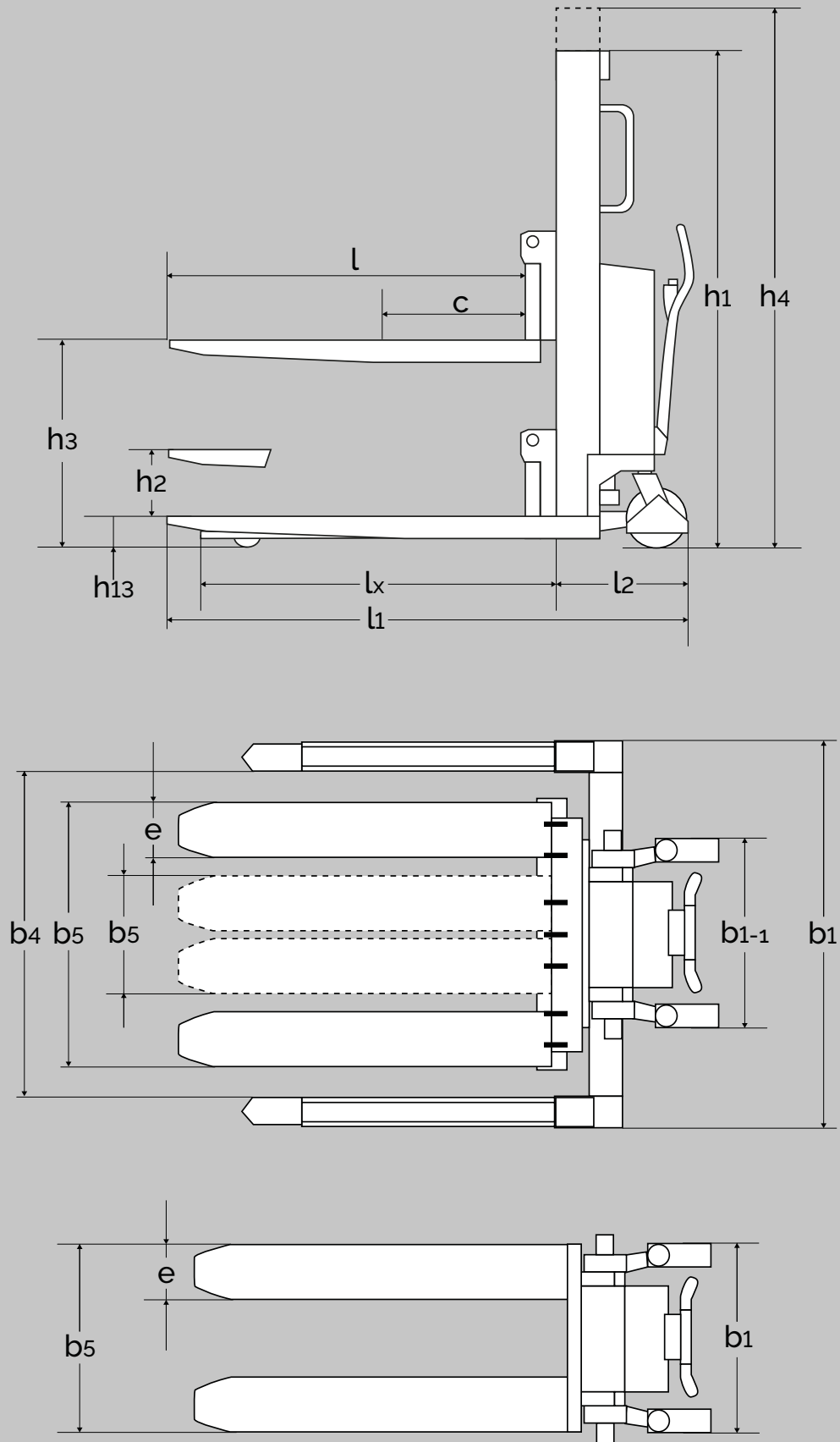
**MANUAL STACKER  
(EXPLOSION PROOF)**



PRODUCT (measured in mm)		HSI 1000					HSSI 1000				
Adjustable fork carriage **							●	●	●	●	●
Fixed forks **		●	●	●	●	●					
Capacity in kg		1000	1000	1000	1000	1000	1000	1000	1000	1000	1000
Lifting height	$h_3$	1200	1400	1600	2050	2450	1170	1370	1570	2020	2420
Fork length	$l$	1150					1150				
Overall height	$h_1$	1530	1730	1930	1530	1730	1530	1730	1930	1530	1730
Chassis span	$b$	$b_1$					654				913
Overall width	$b_1$	654				913	$b_4 + 225$				
Fork span	$b_5$	560					350/800				
Length without forks	$l_2$	390					435				
Overall length with 1150 forks	$l_1$	1650			1660		1650				
Telescopic mast					●	●				●	●
Overall height	$h_4$	Without telescopic mast			2490	2890	Without telescopic mast			2490	2890
Lowered height	$h_{13}$	90					65				
Load centre	$c$	max. 600					max. 600				
Width between legs	$b_4$						435-1250 not adjustable				
Fork width	$e$	163					163				
Run-in length	$l_x$	1005					1005				
Gangway (pallet: 1200 x 800)	$A_{st}$	2020*					2020				
Free lift	$h_2$				190					190	
Turning angle of wheels		180°					180°				
Lifting speed		normal/quick 17/54 mm per pump					normal/quick 17/54 mm per pump				
Lowering speed with/without load		0,21 m/s					0,21 m/s				
Weight in kg (without battery)		193	197	201	255	264					

\* Tests show that 1450 mm are enough.

**ELECTRIC STACKER INOX + STRADDLE**

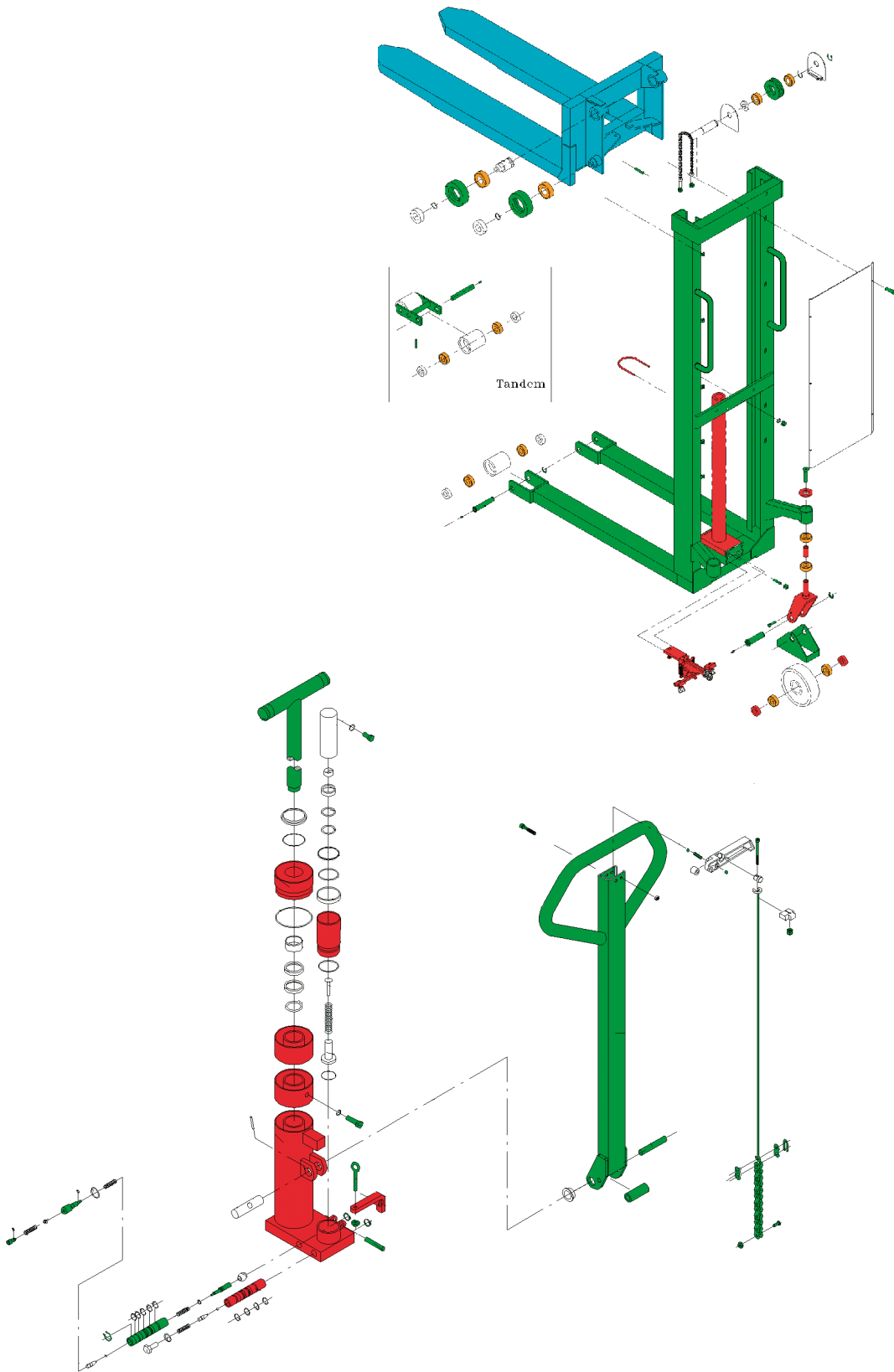









PRODUCT (measured in mm)	EHSI 1000						EHSSI 1000					
-----------------------------	-----------	--	--	--	--	--	------------	--	--	--	--	--

Adjustable fork carriage **							●	●	●	●	●	●		
Fixed forks **	●	●	●	●	●	●								
Capacity in kg	1000	1000	1000	1000	1000	1000	1000	1000	1000	1000	1000	1000		
Lifting height	$h_3$	1200	1400	1600	2050	2450	2850	1170	1370	1570	2020	2420	2820	
Fork length	$l$	1150						1150						
Overall height	$h_1$	1530	1730	1930	1530	1730	1930	1530	1730	1930	1530	1730	1930	
Wheel span – external	$b_{1-1}$	$b_1$						670						930
Overall width	$b_1$	670						930	$b_4 + 225$					
Fork span	$b_5$	560						350/800						
Length without forks	$l_2$	500						550						
Overall length with 1150 forks	$l_1$	1715			1725			1815						
Telescopic mast				●	●	●				●	●	●		
Overall height	$h_4$	Without telescopic mast			2490	2890	3290	Without telescopic mast			2490	2890	3290	
Lowered height	$h_{13}$	90						65						
Load centre	$c$	max. 600						max. 600						
Width between legs	$b_4$	435-1250 not adjustable												
Fork width	$e$	163						163						
Run-in length	$l_x$	1005						1005						
Gangway (pallet 1200 x 800)	$A_{st}$	2200*						2435						
Free lift	$h_2$				190						190			
Turning angle of wheels		180°						180°						
Pump motor		1,1 kW 12 V						1,1 kW 12 V						
Lifting speed irrespective of load		0,07 m/s						0,07 m/s						
Lowering speed irrespective of load		0,08 m/s						0,08 m/s						
Weight in kg (uden batteri)		218	222	226	283	292	302							

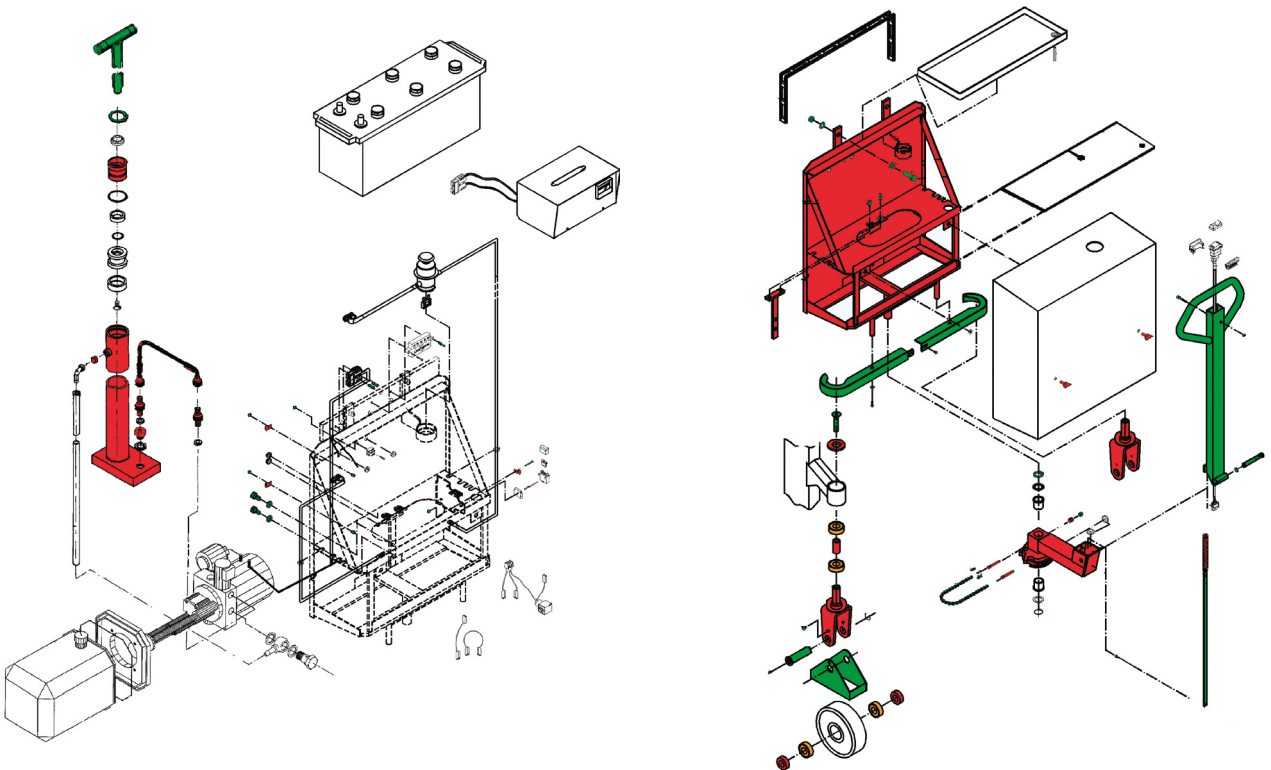
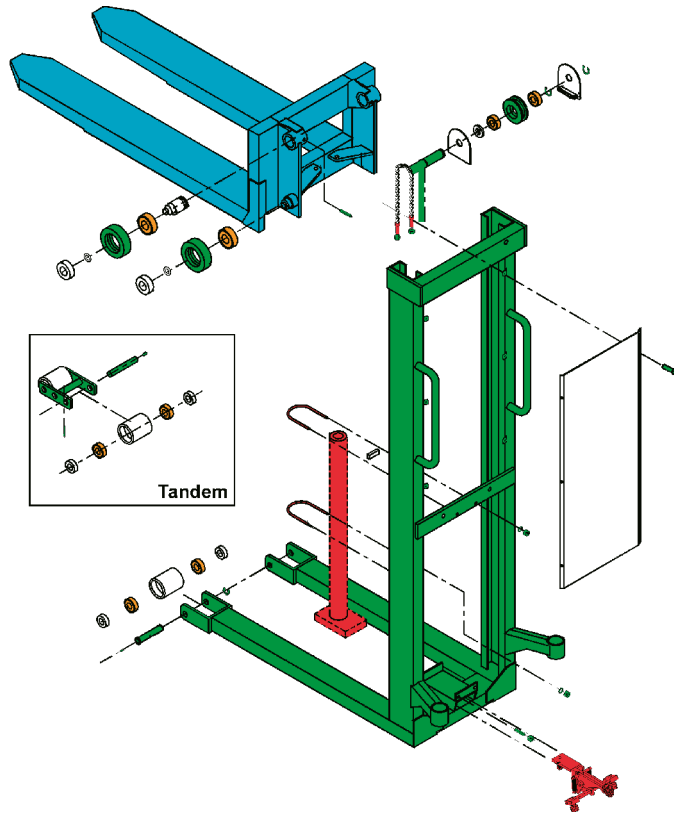
\* Tests show that 1530 mm are enough.








MANUAL STACKER INOX - HSI/HSSI 1000



						
<b>Acid-resistant steel</b>	<b>Stainless steel</b>	<b>Zinc-iron black passivating + sealer*</b>	<b>Zinc-iron silver passivating + sealer*</b>	<b>Rubber sealed bearings</b>	<b>Bronze</b>	<b>Painted 130-150 µm</b>
EN 14404 (AISI 316L) EN 14460 (AISI 329)	EN 14305 (AISI 303) EN 14301 (AISI 304)	Fe//ZnFeX//Fn//T2	Fe//ZnFeX//Cn//T2			

\*chromated



						
<b>Acid-resistant steel</b>	<b>Stainless steel</b>	<b>Zinc-iron black passivating + sealer*</b>	<b>Zinc-iron silver passivating + sealer*</b>	<b>Rubber sealed bearings</b>	<b>Bronze</b>	<b>Painted 130-150 µm</b>
EN 14404 (AISI 316L) EN 14460 (AISI 329)	EN 14305 (AISI 303) EN 14301 (AISI 304)	Fe//ZnFeX//Fn//T2	Fe//ZnFeX//Cn//T2			

\*chromated

# Trucks for explosive atmospheres

Our **manual pallet truck, highlifter and stacker** also come in special explosion proof versions.

The manual trucks must fulfil the ATEX-directive, and they are manufactured in concordance with the ATEX directive no. 2014/34/EC and relevant standards.

The trucks are categorised in equipment group II and are suitable for areas classified as zone 1/zone 21 (do also cover zone 2/zone 22). This means, areas in which explosive atmosphere is generated occasionally due to different gases or dust.

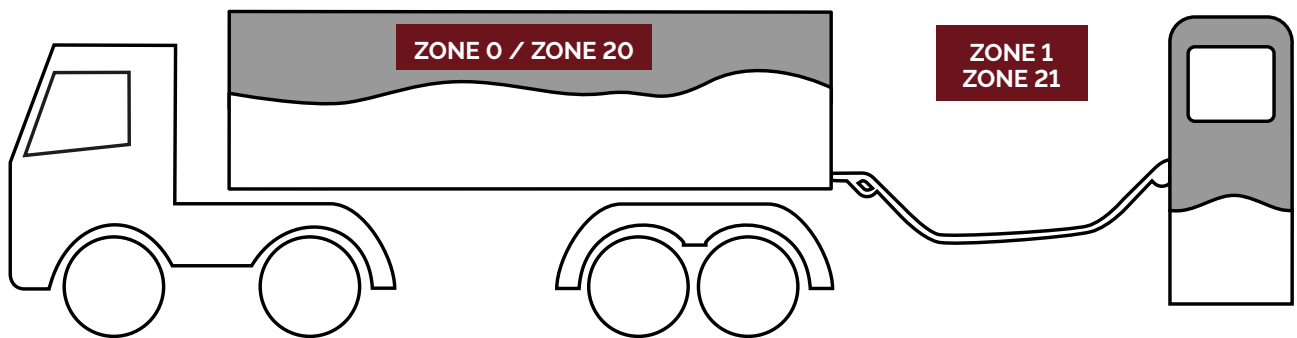
We construct the trucks in high quality stainless steel and with minimum one vulkollan anti-static wheel in order to avoid static electricity.

The trucks are suitable for the pharmaceutical, chemical, oil, gas and painting industry.

The explosion proof trucks are characterised by the following product labels:



**II 2G Ex h IIB T6 Gb**  
**II 2D EX h IIIB T85°C Db**



The sketch shows an example of a zone.  
Gas: Zone 0, 1 and 2.  
Dust: Zone 20, 21 and 22.



# In which environment do you want to use the product?

## Material

- Please check our key sketch.

## In general

- Acid-resistant steel AISI 316L for the forks
- Stainless steel AISI 304 for chassis and other exposed components
- Electric print is coated with DCA SCC3 (conformal coating)
- Exposed plugs are sealed with Gasket Silicone 273
- All electric parts are sprayed with WD-40.
- Chains, chain wheel, support rollers etc.: Various steel alloys - not corrosion resistant.
- Less exposed parts: Zinc coating according to DIN 50979- ZnFe8/Cn/T2 (408 hours salt spray test)
- Ball bearing with rubber sealing.
- Motor: IP44
- The charger is not protected against moisture, so in general external charger is used. Charging should take place in a dry environment.
- If possible, the product is to be placed in a dry and heated room, when not used.

## Maintenance

To achieve the longest possible operational time, it is important that stainless products are maintained regularly.

The frequency depends on the usage.

### [Cleaning/Maintenance of stainless products](#)

#### Every third month

- Electric parts are sprayed with WD-40
- Plugs and connections are checked and cleaned for brownish layer and bad connections

#### Warranty

- When used in wet environments, the warranty does not cover damages caused by moisture. This might be rust damages to galvanized parts and faults on electrical parts.

# In which environment do you want to use the product?

Stainless steel products operate in different environments and must meet different requirements from our customers. What is your environment?

Environments	Examples industries	Logitrans products managing these environments
<p><b>Very aggressive, wet environments</b> The product is wet due to liquid dissolutions (acid, base or brine) almost all the time.</p> <p><b>Cleaning</b> Aggressive cleaning. Cleaning with foam (acid or base) (washing) PH in the cleaning material is much lower or much higher than 7.0</p>	<p><b>Preparation processes in</b> Food and fish industries Slaughterhouses Dairies</p>	
<p><b>Aggressive, wet environments</b> The product is wet and moist most of the time.</p> <p><b>Cleaning</b> Aggressive cleaning. Cleaning with foam (acid or base) (washing). PH in the cleaning material is much lower or much higher than 7.0</p>	<p><b>Production processes in</b> Food industry Slaughterhouses Dairies</p>	
<p><b>Clean, moist environments</b> The product is moist only occasionally.</p> <p><b>Cleaning</b> Gentle cleaning when wiping or washing (only forks). Neutral water (PH7), when necessary with gentle cleaning materials.</p>	<p>Pharmaceutical industry Food industry</p>	
<p><b>Clean, dry environments</b> The product is dry all the time.</p> <p><b>Cleaning</b> Cleaning the products with dry or moist cloth.</p>	<p>Pharmaceutical Packaging in the food industry</p>	<p>All Logitrans stainless products Panther Inox, HS/EHS Inox HL/EHL Inox, Logitilt Inox Rotator Inox, Multi Drum Turner Inox Stainless fully-powered products EHL Inox Plus HL Inox Plus</p>
		Panther Inox Plus